

Aramis

Princess V78



Elegance, style, unlimited spaces and modern technology characterize this amazing yacht who can ensure an intoxicating blend of excitement, comfort, performance and safety.

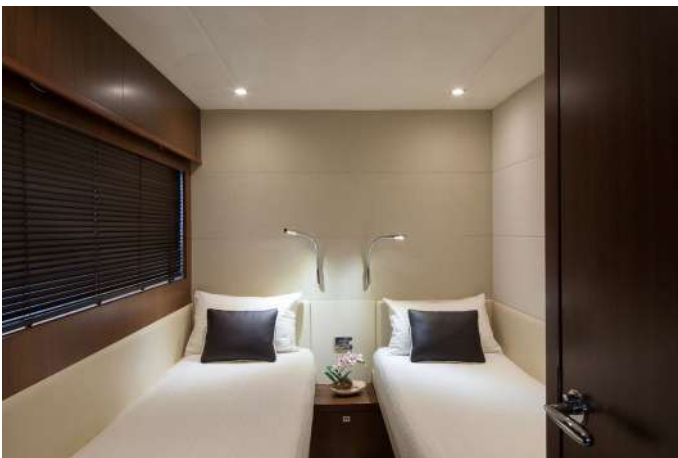


The enormous and enjoyable cockpit is particularly studied in order to offer spaces and arrangements unequalled by other yachts of the same dimensions.



The expansive saloon with the forward dining area and the large opening roof, is light airy and generously spacious. The sliding glass door and electric drop window can be opened to transform the saloon and the cockpit zone into one magnificent entertaining space.

Aramis




The stylish lower accommodations with the exclusive full-beam master suite, the vip suite on the bow and the two further cabins, provide top quality of life on board blend of comfort and the best that cruising can offer for 8 cruising people.



The wide galley and the three well-appointed bathrooms complete this yacht.

Aramis

Year 2011 Refit 2017

Layout	Principal dimensions
	<p>Length overall (incl. pulpit): 23,83 m Length overall (excl. pulpit): 23,27 m Beam: 18 ft 6 in Draft: 5 ft 5 in Displacement approx.: 104.719 lbs Fuel capacity: 1.206 gal/1.449 US gal Water capacity (incl. Calorifier): 245 gal/294 US gal</p>
Engines and generators	
<p>Engines: 2 Caterpillar C32 A (2 x 1825mhp) Generators: 1 ONAN 22,5 Kw - 1 KOHLER 17 Kw</p>	
Other specifications	
<p>Maximum speed: 39 knots Cruising speed: 26 knots Fuel consumptions: 400 lt/hr Range: 350 nm Accommodations: guests 8 in 4 cabins; crew 2 in 1 cabin</p>	

PRICE LIST - EURO (PRICES WITHOUT VAT, + VAT 8,8%)

Period	Daily price	Weekly price
High season	€ 7.000 (1/15 july € 6.000)	€ 41.000 (1/15 july € 37.000)
Low season	€ 5.500	€ 33.000

High season: july, august (from july 1st to 15th discount of 10%; prices in parenthesis).

Low season: may, june, september, october

The prices include: crew, assurance and la Maddalena Park Fee.

VAT, fuel, food and beverage and mooring costs (except Poltu Quatu) excluded.

Daily costs of the all-in refund in the Poltu Quatu mooring:

€ 80 low season - € 200 high season